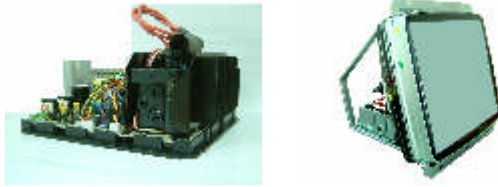


3M – Tri Mode Family 24.8 inch to 39 inch



GENERAL SPECIFICATION

1. Input Voltage 100~240VAC 50/60HZ
2. Power Consumption (Max.) 115W to 140 watts
3. Horizontal Synchronizing Signal Frequency 15K, 24K, 31K automatically.
4. Vertical Synchronizing Signal Frequency 47~70HZ
5. Video TTL 2.5~5.0Vp-p (1K Ω Impedance)
ANALOG 0.7Vp-p (75 Ω Impedance)
6. Synchronizing Signal
TTL Positive / Negative Going (Separate or Composite)
7. Resolution 560 \times 240, 640 \times 350, 640 \times 480
8. Signal Connector 6 PIN (R.G.B. , GND , H+V , V)
Or 15 PIN D-sub (Male)

Notes:

SW501 Termination switch, set this for optimum picture.

This monitor has been pre-set by the factory in 24 Khz EGA Mode.

To use in 15Khz CGA Mode adjustments of size, position etc. will be required.

To use in 31 Khz VGA mode reset SW501 to 75 ohm position and adjust controls as required.

Use the enclosed 15 pin adapter for CGA/EGA use.

Visit our website Niemandisplays.com to register your warranty and receive a complete service manual.